



**GREAT THINGS  
HAPPEN WHEN WE  
LIVE UNITED**



# 2016-17 Board of Directors and Staff



## UNITED WAY OF MARTIN COUNTY BOARD OF DIRECTORS

**Chair:** Crystal Stiles, Florida Power & Light Company

**Chair-elect:** Chad Hastings, Lesser, Lesser, Landy & Smith

**Campaign Chair:** Denise Ehrich, US Trust

**Fund Distribution Chair:** Kimberly Perron, Resort at Home

**Strategic Planning Chair:** Taryn Kryzda, Martin County Board of County Commissioners

**Treasurer:** Lynn Blackard, CPA, Rehmann

**Advocacy Chair:** Ademil Castrillo, Wells Fargo

**Secretary:** Carol G. Houwaart-Diez, United Way of Martin County

**Volunteerism Chair:** Frank Tidikis

**CHARACTER COUNTS! Chair:** Robyn Vanover, University of South Florida

**Immediate Past Chair:** Amy Albury, Florida Power & Light Company

**Khenni Anderson,** Martin County Supervisor of Elections

**Thomas Campenni,** City of Stuart

**Jane Cebelak,** Indian River State College

**Lt. Mike Dougherty,** Martin County Sheriff's Office

**Laurie Gaylord,** Martin County School District

**Rick Grinnan,** Publix Super Markets

Reed Hartman, Hartman Auction Group

Teresa Lamar-Sarno, City of Stuart

Geoff Lieberman, Macy's, Jensen Beach

Lisa Peterson-Sanders, MTM, Inc.

Ruth Pietruszewski, Martin County Tax Collector's Office

Renay Rouse, Martin County Interagency Coalition

Rachel Scott, United Way of Martin County Foundation

Chuck Shaffer, Seacoast Bank

Dave Wishart, Ph.D., Pratt & Whitney

Gene Zweben, Zweben Law Group

## UNITED WAY OF MARTIN COUNTY FOUNDATION BOARD OF DIRECTORS

**President:** Thomas H. Thurlow III Esq., Thurlow & Thurlow, P.A.

**Vice President:** Arthur M. "Rusty" Brink, Jr., CFP, Brink Associates

**Treasurer:** Amy D. Chappel, CPA, Rehmann

**Secretary:** Carol G. Houwaart-Diez, CEO United Way of Martin County

**Charles R. Cleaver,** CPA, MBA, Martin Health System

**Hal Fenner,** Retired Executive

**Rachel Scott,** Retired Consultant

**Robert Weissman,** Retired Executive

## UNITED WAY OF MARTIN COUNTY STAFF

**Carol G. Houwaart-Diez,** President and CEO

**Kathy Brown,** Finance and Data Management

**Lucy Corley,** Director of Community Engagement

**Jennifer DuBey,** Community Impact Coordinator

**Elisabeth Glynn,** Director of Resource Development

**Carol Hodnett,** Vice President of Martin Volunteers and Community Impact

**Holly Laiben,** Director of CHARACTER COUNTS!

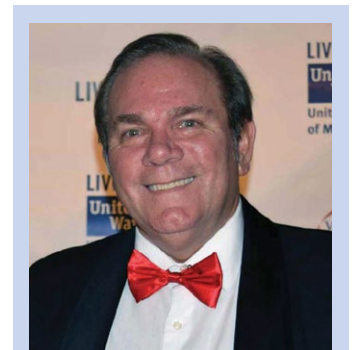
**Nancy McCarthy,** Director of Marketing and Communications

**Nancy Perry,** Vice President of Philanthropy, Major Gifts and Legacy Giving

**Karen Reinhardt,** Administrative Assistant

**Theresa Schineis,** Vice President of Finance and Administration

**Kathleen Stacey,** RSVP Director



United Way bid a fond farewell to Jim Vojcsik as he retired in 2016. Jim led the organization for 17 years and had a combined 30 years of experience in the United Way system.

## Funded Partners

Alzheimer's Community Care

American Red Cross, Martin County Chapter

ARC of Martin County

Big Brothers Big Sister of Palm Beach and Martin Counties

Boys & Girls Clubs of Martin County

Building Bridges to Youth

Caring Children Clothing Children

CASTLE

Catholic Charities of the Palm Beach Diocese

Children's Emergency Resources

Children's Home Society

Coalition for Independent Living Options

Council on Aging of Martin County

Deaf & Hard of Hearing Services of the Treasure Coast

Drug Abuse Treatment Association

Early Learning Coalition of Indian River, Martin and Okeechobee Counties

Epilepsy Foundation of Florida

Father & Child Resource Center

Florida Arts & Dance Company

Gertrude Walden Child Care Center

Habitat for Humanity

Helping People Succeed

Hibiscus Children's Center

Hobe Sound Early Learning Center

Hope Center for Autism

Hope Rural School

House of Hope

Martin County Healthy Start Coalition

Mary's Shelter

Project LIFT

SafeSpace

Salvation Army of Martin County

Shared Services Network of Martin County

Treasure Coast Food Bank

Tykes & Teens

Whole Child Connection

YMCA of the Treasure Coast

211 Palm Beach / Treasure Coast

Need more information about  
**UNITED WAY OF MARTIN COUNTY?**

[UnitedWayMartin.org](http://UnitedWayMartin.org)

**772-283-4800**



@UnitedWayMartin



**Crystal Stiles**

2016–17 Board Chair  
United Way of Martin County

## A MESSAGE FROM UNITED WAY'S BOARD CHAIR

It's an exciting time to serve as board chair for United Way of Martin County, as we embark on the first year under the leadership of our new President/CEO, Carol G. Houwaart-Diez. Carol not only brings a wealth of United Way experience, but she also brings a proven record of facilitating change and building relationships. We are thrilled that she will continue her tradition of outstanding work in our community and I know you join me in offering her and the entire United Way staff your full support as the year progresses.

It's also an exciting time to be involved with United Way as we continue to evolve in our role as community change agent. The funds we raise each year from our generous donors and corporate partners are invested back into the community in programs that ensure our neighbors have a safe place to call home, a solid education, food on the table and the security that comes with financial independence.

But, we realize that no matter how much money we raise and distribute to support these indispensable charitable programs, more work still needs to be done to solve the problems causing people to need these programs in the first place. We are working to organize, focus efforts and bring in community partners to impact root causes, public policy and systems changes that address these socially complex issues.

But, we can't do it without you.

We invite you to join us in our journey to change lives and lift the community. You can give, you can advocate and you can volunteer. Consider yourself officially invited to LIVE UNITED.



**Carol G. Houwaart-Diez**

President/CEO  
United Way of Martin County

## A MESSAGE FROM UNITED WAY'S PRESIDENT/CEO

It is truly my honor and privilege to serve as the new President/CEO for our United Way. While I come to my position with vast United Way knowledge, I am extremely excited to learn more about our Martin County community.

In the short time that I have been here, I have learned that this community genuinely cares about those who need assistance. Whether it is a child who needs help with reading, a senior who needs meals delivered or a person who has mental or physical challenges, Martin County residents are supporting programs to help these individuals.

I've met many people who inspire and motivate me to continue the important work that we are doing in this community – I've heard the squeals of joy from preschool children as they learn new ways to play that are both fun and educational, I've seen the look of relief in a mother's eyes when she found a safe haven at a domestic violence shelter with her two young daughters, and I have met a typical family that simply needed groceries to help them until the end of the month. While you might never get the chance to meet these extraordinary people, I carry their stories with me every day, and it helps me to focus on what is truly important in life – helping our neighbors.

I look forward to the coming year as I learn more about the community I now call home. I challenge each of you to invest in United Way and be a part of making Martin County a stronger and healthier community for decades to come.

Thank you.

### OUR MISSION:

To lift the community and change lives together through the collective power of advancing the common good.

### UNITED WAY'S PRIORITIES:



Audrey and her teacher Nicole



**GREAT THINGS  
HAPPEN WHEN WE  
LIVE UNITED**

to

**IMPROVE EDUCATION**

# Thanks to your United Way investment...

**85%**  
of students

in after school programs improved or maintained their academic performance in reading/language arts



More than  
**90%**

of VPK graduates met the readiness skills to succeed in school



**300**  
students

at risk of falling behind received additional instruction over the summer months by certified teachers



## When children can learn and grow at the appropriate pace, they are more likely to graduate on time and become employable.

Meet Audrey, a happy 5-year-old girl with golden curls and an infectious laugh. She is incredibly smart, confident and kind. This year, Audrey started school kindergarten-ready and is consistently exceeding academic expectations.

However, Audrey's story could have easily taken a different turn if it wasn't for an early intervention program funded by United Way of Martin County. While in the Voluntary Pre-Kindergarten (VPK) program at Hobe Sound Early Learning Center, Audrey's teacher noticed that she was having trouble writing her name. Upon further assessment, the teacher realized she could not form all of her letters. That's when Audrey was referred to small group instruction, funded by United Way, to provide her with the necessary readiness skills to enter kindergarten.

Each week Audrey met one-on-one with an educator at her school who provided extra learning opportunities. According to her mom, Elise, they saw immediate and drastic improvement in her writing skills.

"In any classroom environment, the teachers are tasked with so many things it's hard to give any child one-on-one time," Elise said. "I definitely think she would have been lacking in some of her kindergarten preparedness if she didn't have that individualized attention through the small group instruction program."

*By investing in academic success in their early years, we're helping to set children on a path to live safe and healthy lives and contribute positively to society, which is our aspiration for all of the children in our community – just like Audrey.*



Debbie, VITA volunteer,  
and Yolanda



**GREAT THINGS  
HAPPEN WHEN WE  
LIVE UNITED**

to

**SUPPORT  
FINANCIAL STABILITY**

# Thanks to your United Way investment...

Last year, United Way of Martin County's VITA volunteers helped 365 individuals and families receive a total of

**\$409,127**

in refunds while saving nearly

**\$100,000**

in tax preparation fees.



Residents saved

**\$141,209**

on prescription costs in 2015, as a result of the successful partnership with FamilyWize Community Service Partnership



The future success of our community is directly tied to the financial stability of working families. When this population suffers and is forced to make difficult choices, we all face serious consequences.

Meet Yolanda. She has a full time job as a case manager at a local nonprofit agency and her husband is self-employed. They both work hard so that they can raise their 6-year-old daughter in a safe and secure environment.

Like most young families, life can be hectic at times, but Yolanda doesn't let that get to her. She is a proud homeowner and gets satisfaction from investing in home improvement projects. Yolanda looks forward to tax season because she knows that United Way is going to help her keep more of her hard-earned money through the Volunteer Income Tax Assistance (VITA) program.

Each year, United Way's IRS-trained volunteers offer free tax preparation for low-to-moderate income working families and individuals.

A few years ago, the money Yolanda received from her tax return allowed her to install a fence in her yard, and this year she's planning to use her tax return to paint her home.

"The VITA program is great for people like me who work during the day and have young children," says Yolanda. "It's a quick process and our daughter doesn't mind coming along, but the best part is that it's totally free, which means I have more money to spend on home improvements."

Saving a couple of hundred dollars each year on her tax return might not seem like a lot of money to most people, but for Yolanda, it means she can continue building a better life for her family.

*By providing free resources such as tax assistance or the FamilyWize prescription discount card, and by funding local programs to enhance financial stability, United Way is helping to create a brighter future for all families— just like Yolanda's.*

Isabel, Adrian  
and Brigitte



**GREAT THINGS  
HAPPEN WHEN WE  
LIVE UNITED**

to

**PROMOTE GOOD HEALTH**



## Thanks to your United Way investment...

More than

**1.7 million**

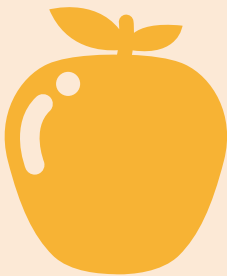
meals were distributed to children, families and seniors in need



**139**

children

from low-income families residing in Indiantown received a daily healthy meal and snack, healthy eating education and increased their physical activity during the summer months



**71.7%**

of pregnant women

in Martin County received medical care in the first trimester



## Promoting healthy behaviors and increasing access to primary and preventative health care and mental health services enhance the quality of life and overall health of our economy and the community.

Meet Adrian, an adorable 5-year-old boy with big brown eyes, a cherubic face and a sweet disposition. Two years ago, Adrian's primary caregiver, Isabel, noticed that Adrian was not reaching developmental milestones, such as the ability to stay focused and maintain eye contact, among others. Adding to her concern, Adrian was not thriving in the classroom environment and it was affecting his ability to learn. "I was sick to my stomach every day because he was so miserable at school," Isabel said. "When you love somebody and you know that they are unhappy, it just rips you apart."

After consulting with Adrian's preschool teachers and pediatrician, Isabel took Adrian for an evaluation where he was diagnosed with Autism Spectrum Disorder.

Isabel knew that early intervention was critical, and the more hours devoted to behavioral therapy, the better. After researching the options, Isabel found Hope Center for Autism, a public charter school for children with autism and related disabilities. Through low staff-to-student ratios and individualized, comprehensive and intensive educational program, The Hope Center helps children with autism learn to their full potential.

Although the school has a perpetual waiting list, thanks to a stroke of luck and Isabel's persistence, Adrian secured a spot in the summer program, funded by United Way of Martin County.

In a relatively short time, Adrian made significant gains. His teacher, Brigitte, says she witnessed tremendous growth in all areas of development. "Academically he has come leaps and bounds, behaviorally he continues to improve, and socially he is interacting more with his peers," she said.

Most importantly, Adrian's overall health and happiness has improved. "He is loving school and that is the biggest part of it because loving it means that he can learn," Isabel said.

*By investing in early intervention for individuals with developmental delays, we are helping hundreds of children in our community reach their full potential—just like Adrian.*

# GREAT THINGS HAPPEN WHEN WE TAKE ACTION



# MARTIN VOLUNTEERS

United Way of Martin County

## Thanks to Martin Volunteers' impact in our community...

**865**  
volunteers  
contributed  
**76,457** hours



**618**  
RSVP  
volunteers  
contributed  
**29,166** hours



Value of  
**\$2.6**  
million  
of volunteer service  
for our community



Martin Volunteers' mission is to engage people of all ages and backgrounds in volunteer service that enriches the individual and strengthens the community.

Through Martin Volunteers, United Way coordinates the Retired and Senior Volunteer Program (RSVP), White Doves Holiday Project, Executive Service Corps of the Treasure Coast and HandsOn Group Volunteer Projects.



For Alberto, every Christmas was a happy one, even when times were tough. Alberto's childhood was not unlike many others – his father juggled multiple jobs while his mother took care of him and his two older brothers. Alberto remembers one year that was particularly challenging when his father's hours were significantly cut back just as the holidays were approaching.

He didn't know it at the time, but United Way's White Doves Holiday Project was behind the sprawling heap of presents underneath the tree that year. It wasn't until decades later when he was approached about volunteering that his brother told him about their personal connection to the mission.

"Growing up I was given extra support. Now that I'm an adult and independent I want to give back because I was blessed to receive as a child," Alberto said.

Alberto paid it forward for thousands of Martin County children by volunteering his time and energy for United Way's White Doves Holiday Project.

For almost three decades, United Way of Martin County has provided struggling families with toys and food during the holidays. It takes the compassion of hundreds of donors, volunteers and local businesses working together to create more than 3,000 smiles on Christmas morning.

Smiles, like Alberto's, that continue to shine and make a positive impact in our community.

**2,427 children**  
were provided with  
**12,991 toys**  
and  
**320 bikes**  
through the  
**White Doves  
Holiday Project**

2015

**GREAT THINGS  
HAPPEN WHEN WE DO  
THE RIGHT THING**



**CHARACTER  
COUNTS!**

United Way of Martin County



The goal of United Way's CHARACTER COUNTS! program in Martin County is to create a strong community of citizens who embody the Six Pillars of Character – Trustworthiness, Respect, Responsibility, Fairness, Caring and Citizenship.

In 2015, United Way commemorated 20 years of character building in Martin County through its CHARACTER COUNTS! program.

It all started in 1995 with a simple vision – to live in a community where all citizens, regardless of age, recognize the significance of ethical and moral values.

That's when five local community leaders invited citizens to learn about a unique program called CHARACTER COUNTS!

During two town hall meetings, they discussed the opportunity to break a growing pattern of irresponsible behavior among community sectors, and to implement a proactive strategy to promote social values and personal character among all age groups.

That same year, under the direction of the late Joe Kordick, founding chairman and a former Ford Motor Co. executive, CHARACTER COUNTS! in Martin County was born and continues to build on the framework for character development and prevention efforts in Martin County, the Six Pillars of Character.

To celebrate the 20-year milestone, CHARACTER COUNTS! founder Michael Josephson visited Martin County. One of the nation's most respected consultants in the field of ethics and character, Josephson spoke to community leaders, educators and visited schools and non-profit agencies in Indiantown that have successfully embraced the CHARACTER COUNTS! program.

- 25 students were recognized as **Joe Kordick Youth Character Award** winners
- 9 recipients received **Employee Pillar of Character Awards**
- 1 local business was honored as **Business of Character**
- 35 students were recognized as **CHARACTER COUNTS! Students of the Week**
- 1200 kindergarten students received CHARACTER COUNTS! T-shirts through our Annual **Kindergarten T-Shirt Project**

For complete list of award winners, visit [www.UnitedWayMartin.org/CharacterCounts](http://www.UnitedWayMartin.org/CharacterCounts).





Hunter & Rita Wolcott



Richard & Carolyn Jacobus



Fred & Betty Kopf



Jan & Bob Crandall



Bob Croce, Nancy Perry, Debi Owens with Wilmington Trust

## United Way of Martin County Tocqueville Society

The United Way's Tocqueville Society provides the passion, expertise, and inspirational leadership that enable United Way to drive real change. Together last year Tocqueville Society members contributed more than \$1,000,000 in our local community.

The Tocqueville Society members were honored during a reception at the Sailfish Point home of Dennis and Linda Longstreet. The evening was graciously underwritten by Wilmington Trust. The Alexis de Tocqueville Outstanding Philanthropy Award was dedicated to the memory of Barbara Briggs Trimble for her longtime support of United Way.



Dennis & Linda Longstreet, Bob & Karen Croce



John and Carrie Morgridge



Paul & Anaflor Graham  
- new members



Joe and Margaret Richebourg Temple



Richard and Karen Dakers

### TOCQUEVILLE SOCIETY MEMBERS 2015/2016

#### Ordre d'Egalite \$50,000 - \$74,999

Mr. and Mrs. Robert W. Croce - L  
Joe Temple Family - L

#### Ordre de Liberte \$25,000 - \$49,999

Mr. and Mrs. Peter Behr - *new members*  
Paul and Jan Collier  
Lindy Donigan and Deane MacMillan  
Mr. and Mrs. Alan Finegold  
Paul Graham and Anaflor Graham - *new members*  
Mr. and Mrs. Warren Hayford  
Arthur and Marylin Levitt  
Mr. and Mrs. John Loewenberg  
Mrs. Lambert H. Mott  
Jim Noble  
Susan R. and John W. Sullivan  
Daniel P. and Grace I. Tully Foundation  
Barbara Briggs Trimble Estate- L  
Carol Webb and Don Wemlinger - L

#### Patrons de la Societe \$15,000-\$24,999

Tom and Polly Campenni - *new members*  
Karen and Richard Dakers - *new members*  
Mike and Linda Evans  
Mr. and Mrs. Thomas Hudson, Jr.  
The Kordick Family Trust - L  
Mr. and Mrs. H.W. Lichtenberger - L  
Dennis and Linda Longstreet- L  
Morgridge Family Foundation  
Charlene and John Roberts  
James and Magalen Webert  
Richard A. Zappala Family Foundation  
Mr. and Mrs. Robert Weissman - L

#### Membres de la Societe \$10,000-\$14,999

Robert and Patricia Bauman Family Foundation  
Mr. and Mrs. S. Prestley Blake  
Margaret Wyeth Bradley - L  
Mrs. Joan Brengel - new member  
Frank M. Byers, Jr.  
Mr. and Mrs. William Conner

Josephine Covelli and The Albert M. Covelli Fndn.  
Mr. and Mrs. Robert Crandall  
Mr. and Mrs. William Crandall  
Mr. and Mrs. Rodney D. Day III  
Lee and Gaby Elsey  
Harold and Melanie Fenner  
William C. and Joyce G. Ferguson - L  
Rip and Noreen Fisher  
Joy and Pete Funston  
Mr. and Mrs. Richard Genthe  
Per and Astrid Heidenreich  
Elizabeth Herold  
Mary and Robert J. Higgins  
Mrs. Mim L. Huffam  
Richard G. Jacobus Family Foundation  
Ken and Cindy Johns  
Fred and Betty Kopf  
Mr. and Mrs. Robert J. Merrick  
Mr. and Mrs. James F. Orr III  
The Patricia and Douglas Perry Foundation  
Armando Pimentel  
Mr. and Mrs. Timothy Powers - *new members*  
Mr. John Pratt  
Mrs. Wendy Randall - *new member*  
Maralyn and Michael K. Reilly- L  
Diana D. Rollins  
Mr. and Mrs. Charles A. Ruibal  
Gerald Saelzer - *new member*  
Tom and Linda Schaefer  
Peter and Alison Small  
Sontheimer Foundation  
Mr. and Mrs. Douglass M. Stewart - L  
Mr. and Mrs. Charles R. Walgreen, III  
Mr. and Mrs. William H. Whittemore - *new members*  
Wolcott Family Foundation  
Richard and Barbara Young

\* five members wish to remain anonymous  
L = Tocqueville Legacy Circle

# United Way of Martin County Foundation

## FOUNDATION CAMPAIGN UPDATE

Contributions of cash,  
pledges and legacy gifts -

# \$6.5 MILLION

### Foundation Honors John & Susan Sullivan

The Foundation honored John & Susan Sullivan with the 2016 Frances Langford Humanitarian Award. The award recognizes community leaders who, like Frances, demonstrate the care and compassion for humanity in their lives and deeds. The Sullivans served for many years as the Loblolly United Way campaign coordinators and are well known throughout Martin County for their humanitarian efforts in helping those in need.

### The Lichtenberger Family Foundation pledges \$1,000,000



Bill Lichtenberger knows what it means to LIVE UNITED. This generous endowed gift will be added to a previous \$200,000 gift and the proceeds will be split between United Way of Martin County and United Way of St. Lucie County to meet the current and future unmet needs in those communities.

“It is important that those of us who have the means help those less fortunate. The United Way does a good job of finding those people and organizations with the greatest need.” - *Bill Lichtenberger*

### Ted Brown and Bob Thomas retire from Foundation Board

Ted and Bob were there in the beginning. In the aftermath of the hurricanes that hit Martin County in 2004, many partner agencies turned to United Way for financial assistance with damaged facilities and emergency needs. As a result, under Ted and Bob’s leadership, the Board recognized the need for a permanent source of funds beyond the annual campaign. The Foundation was established as a separate 501(c)3 and Ted and Bob’s contributions to the Foundation will be their legacy for generations to come.



Bob Thomas

Todd Thurlow and Ted Brown



Susan & John Sullivan, Bob Kramer, Jim Sopko

## LEGACY SOCIETY MEMBERS & LEGACY FRIENDS September 2016

Members of the Legacy Society are individuals who have made a commitment to the Foundation through bequests, trusts or naming United Way of Martin County as a beneficiary of an IRA, pension plan, life insurance or charitable gift annuity.

### Legacy Friends - Foundation gifts of \$1,000 or more

- |   |                                    |
|---|------------------------------------|
| Kathryn and L.J. Aubrecht Estate        | Jean W. Markell Trust              |
| Mitchell Benedict Trust                 | Everett Miller Estate              |
| Prestley & Helen Blake                  | Gordon K. Miller Estate            |
| Margaret “Meg” Bradley - L              | William & Thelma Miller Trust      |
| Kathy & Rusty Brink                     | Maralyn & Michael K. Reilly - L    |
| Debra & Robert Carttar                  | Anonymous - L                      |
| Leo & Dolores Clancy                    | Harry Rosen Estate                 |
| Mr. & Mrs. William Clark                | Priscilla & Charles Sawicki        |
| Mr. & Mrs. William Crandall             | In memory of Dick Schwinkendorf    |
| Mr. & Mrs. Robert W. Croce - L          | Chuck & Rachel Scott               |
| LaVerne J. Donaldson Estate             | Mr. & Mrs. Douglass M. Stewart - L |
| Drs. Salvatore & Edith Donohue          | Edward Tatarczuk Estate            |
| Katherine Dunscombe Estate              | Barbara & Morgan Taylor            |
| Mr. & Mrs. Bruce Farren                 | Joe Temple Family - L              |
| William C. & Joyce G. Ferguson - L      | Pete Thompson                      |
| Maxwell Friedlander Estate              | In memory of Daniel Todzia, Jr.    |
| Ginny & Richard Genthe                  | Barbara Briggs Trimble Estate - L  |
| Mr. & Mrs. George H. Grimm              | Mr. & Mrs. Gene VanCuren           |
| William & Eleanor Heffernan Estate      | Donna & James Wojcsik              |
| Kenneth Hyde Estate                     | Carol Webb & Don Wemlinger - L     |
| Jane & George Kaiser                    | Jill Webb-Forbes                   |
| Fred & Betty Kopf                       | Mr. & Mrs. Robert Weissman - L     |
| Joseph A. Kordick Estate                | William & Martha Whittemore        |
| The Kordick Family Trust - L            | Dr. Sara Wilcox PhD                |
| Frances Langford Foundation - L         | Dick & Barbara Young               |
| The Lichtenberger Family Foundation - L |                                    |
| Dennis & Linda Longstreet - L           |                                    |
| Alan S. Lincoln Estate                  |                                    |

*L - Tocqueville Legacy Circle (planned gifts/  
contributions of \$200,000 or more)*

# 2015-16 Keel Club – Community Campaign

## Top Community Campaigns

1	Sailfish Point	\$412,986
2	Harbour Ridge*	\$275,543
3	Loblolly	\$144,091
4	Mariner Sands	\$100,935
5	Willoughby	\$91,185
6	Sewall's Point	\$76,045
7	Jupiter Island	\$68,050
8	Sandhill Cove	\$40,175
9	Jupiter Hills	\$41,216
10	Monarch	\$40,138
11	Piper's Landing	\$22,235
12	Stuart YCC	\$14,015
	Misc. communities	\$165,405
	<b>ALL COMMUNITIES</b>	<b>\$1,492,019</b>

\*Harbour Ridge split w/UWSLC - actual investment \$168,496.  
UWSLC \$107,047



Bob Croce, Jo Covelli and Dennis Longstreet are the campaign co-chairs of the top community Sailfish Point



Lois and Brent Fraser are the campaign chairs of Harbour Ridge

## SAILFISH POINT

### TOCQUEVILLE SOCIETY

Robert and Patricia Bauman Family Foundation  
Mr. and Mrs. S. Prestley Blake  
Josephine Covelli and The Albert M. Covelli Foundation  
Mr. and Mrs. Robert W. Croce  
Karen and Richard Dakers  
Mike and Linda Evans  
Rip and Noreen Fisher  
Paul Graham and Anafior Graham  
Elizabeth Herold  
Ken and Cindy Johns  
Arthur and Marylin Levitt  
Dennis and Linda Longstreet  
Morgridge Family Foundation  
Mr. and Mrs. James F. Orr III  
Diana D. Rollins  
Mr. and Mrs. Charles A. Ruibal  
Tom and Linda Schaefer  
Sontheimer Foundation  
Joe Temple Family  
Mr. and Mrs. Charles R. Walgreen, III  
Carol Webb and Don Wemlinger  
James & Magalen Webert  
Richard A. Zappala Family Foundation

### COMMODORE

Mr. & Mrs. John Adamiak  
Mr. and Mrs. Gary Parlin

### CAPTAIN

Mr. and Mrs. John Reardon

### COMMANDER

Mr. and Mrs. Raymond J. Callahan  
Mr. and Mrs. Leet E. Denton  
Mr. and Mrs. Wayne D. Freihofer  
Mr. and Mrs. John O. Irvine  
John and Tracy Kelleher  
Mr. and Mrs. Stephen W. McKessy  
Mr. and Mrs. Roy T. Peraino  
Frank and Betty Quirk  
Mr. and Mrs. Donald Wilks

## HARBOUR RIDGE

### TOCQUEVILLE SOCIETY

Anonymous  
Mr. Peter Behr  
Mr. & Mrs. William Crandall  
Mr. & Mrs. Harold Fenner  
Mr. & Mrs. H. William Lichtenberger  
Mr. & Mrs. John D. Loewenberg  
The Patricia and Douglas Perry Foundation  
Mr. & Mrs. Timothy C. Powers  
Mrs. Wendy Randall  
Mr. & Mrs. Douglass M. Stewart  
Mr. & Mrs. Robert J. Weissman  
Mr. & Mrs. Richard Young

### COMMODORE

Mr. & Mrs. Bruce Bedford  
Mr. & Mrs. Michael Carr  
Mr. & Mrs. Charles Eppinger  
Mr. Harry Wells

## CAPTAIN

Mr. & Mrs. Leo Clancy  
Mr. & Mrs. Delbert Conner

### COMMANDER

Mr. & Mrs. William B. Anderson  
Mr. & Mrs. Richard Appleby  
Mrs. Lydia Barnes  
Mr. Philip Beekman  
Mr. & Mrs. Richard J. Boyle  
Mr. & Mrs. Robert Brace  
Dr. & Mrs. Richard Brenner  
Mr. & Mrs. Ralph C. Brown  
Mr. & Mrs. Richard Burke  
Mr. & Mrs. Robert Bysshe  
Mr. & Mrs. Ray Compton  
Mr. & Mrs. James Coogan  
Mrs. Adelaide Coy  
Mr. & Mrs. Thomas DeFazio  
Mr. & Mrs. Robert Drisner  
Mr. & Mrs. Howard Foley  
Mr. & Mrs. Brent Fraser  
Mr. & Mrs. Robert Garry  
Mr. & Mrs. John Grimmer  
Dr. & Mrs. Roger J. Harding  
Mrs. Sheryl Hays  
Mr. & Mrs. Steven Johnson  
Mr. & Mrs. Theodore Ketterer  
Mr. & Mrs. Charles LaForge  
Mr. Phillip J. Latreille  
Mr. & Mrs. H. Todd Morris  
Mr. & Mrs. James Morrissey  
Mr. In-Suk Oh  
Mr. & Mrs. John Olson  
Mr. & Mrs. Jonathan R. Page  
Mr. & Mrs. James Pierson  
Mr. & Mrs. George Prince Jr.  
Mr. Eugene C. Rainis  
Mr. & Mrs. Thomas Sall  
Mr. & Mrs. Bradley Thayer  
Mr. & Mrs. William L. Vallett  
Dr. & Mrs. Gregory Warner  
Mrs. Barbara Willard

## LOBLOLLY

### TOCQUEVILLE SOCIETY

Mr. and Mrs. William Conner  
Mr. and Mrs. Rodney D. Day III  
Mr. and Mrs. Warren Hayford  
Per and Astrid Heidenreich  
Richard G. Jacobus Family Foundation  
Maralyn and Michael K. Reilly  
Peter and Alison Small  
Susan R. & John W. Sullivan

### VICE-ADMIRAL

Mr. and Mrs. Peter T. Buchanan  
Mr. and Mrs. John Pigott  
Mrs. Nicholas V. Scheele

### COMMODORE

Mr. and Mrs. Frederick S. Hammer  
Mr. and Mrs. Michael M. Hayes  
King Family Foundation

Mr. & Mrs. Craig McClelland  
Ms. Janet H. Merritt  
Mr. and Mrs. Southwood J. Morcott

#### **CAPTAIN**

Jim Quinn  
Mrs. Howard B. Wentz

#### **COMMANDER**

Mr. & Mrs. Daniel R. Finn, Jr.  
Mr. and Mrs. James T. Flynn  
Mr. and Mrs. Joseph S. Frelinghuysen, Jr.  
Mr. and Mrs. Frederick M. Fritz  
Mr. and Mrs. Raymond V. Gilmartin  
Ms. Eileen T. Grimm  
Mr. and Mrs. John D. Mabie  
Mr. and Mrs. James F. Malone, III  
Mr. and Mrs. Donald H. McCree  
Mr. and Mrs. Kenneth T. Neilson  
Mr. and Mrs. John J. Peacock  
John W. Puth  
Mr. and Mrs. Jack D. Rehm  
The Toolan Family Charitable Fund  
Mr. and Mrs. Ralph B. Vogel

#### **MARINER SANDS**

##### **TOCQUEVILLE SOCIETY**

Paul and Jan Collier  
Mrs. Lambert H. Mott  
Barbara Briggs Trimble Estate

##### **VICE-ADMIRAL**

Mr. and Mrs. Robert Keller

##### **CAPTAIN**

##### **ANONYMOUS**

##### **COMMANDER**

Mrs. Sally S. Clemence  
Mr. and Mrs. Barrett L. Jones  
Martin and Nancy Penn  
Mr. and Mrs. John C. Reagan  
Mr. and Mrs. Robert J. Sullivan

#### **WILLOUGHBY GOLF CLUB**

##### **TOCQUEVILLE SOCIETY**

Frank M. Byers, Jr.  
Joy and Pete Funston  
Mr. and Mrs. Robert J. Merrick  
John and Charlene Roberts

##### **VICE-ADMIRAL**

Mr. and Mrs. Richard A. Bayles  
Mr. and Mrs. Thomas C. Crays

##### **COMMODORE**

Mr. and Mrs. R. David Butler  
Mrs. Margaret D. Carpenter  
Katherine and Richard Garlington Fund of  
the Community Foundation of Palm Beach  
and Martin Counties

##### **CAPTAIN**

Mr. Bernard A. Smith  
Mr. and Mrs. Stanton Weissenborn

##### **COMMANDER**

Mr. & Mrs. Michael Hazeldine  
Mr. and Mrs. Phillip Hoffine  
Mr. and Mrs. James Hutchison

Mr. and Mrs. Gary E. Jay  
Mr. and Mrs. Robert Kearney  
Mr. & Mrs. Lionel M. Lamoureux  
Mr. and Mrs. Henry Logan  
Alice and Allan Mostoff  
Ms. Michele Reilly  
Mr. and Mrs. J. H. Watson  
Mr. and Mrs. Ross Weaver

#### **SEWALL'S POINT**

##### **TOCQUEVILLE SOCIETY**

Lindy Donigan and Deane MacMillan  
Mr. and Mrs. Alan Finegold

##### **ADMIRAL**

Dr. Anis Akrawi and Ms. Carol Gesser

##### **VICE-ADMIRAL**

Mr. and Mrs. Frank S. Tidikis

##### **COMMANDER**

Mr. and Mrs. Armand Cifelli  
Mr. Leo J. Hussey  
Mr. and Mrs. William Morrison  
Robert and Paula Rimer  
Mr. and Mrs. Ray Stevenson  
The Tranter Family

#### **JUPITER ISLAND**

##### **TOCQUEVILLE SOCIETY**

Daniel P. and Grace I. Tully Foundation  
Anonymous

##### **VICE-ADMIRAL**

Lawrence A. Sanders Foundation

##### **COMMODORE**

Mr. and Mrs. Philip Allen  
Marshall and Jamee Field Family Fund  
Dr. Barbara O. Taylor

##### **COMMANDER**

Mrs. Rita H. Dolan  
Mrs. Francis Hatch  
Mr. and Mrs. Stephen B. Timbers

#### **SANDHILL COVE**

##### **TOCQUEVILLE SOCIETY**

Mr. and Mrs. Richard E. Genthe  
Mr. John Pratt

##### **ADMIRAL**

Mr. and Mrs. Gordon C. Belshaw

##### **COMMODORE**

Mr. and Mrs. James B. Henderson

##### **CAPTAIN**

Mr. and Mrs. Eugene J. Flanagan  
Mr. and Mrs. John P. Sebold

##### **COMMANDER**

Ms. Mary Louise Boelter  
Ms. Shirley W. Bradley  
Ms. Shirley Craig  
Mrs. Joan P. Foxwell  
Mr. & Mrs. D. J. Harper  
Mrs. Mary J. Heimann  
Mrs. Helen L. Huff  
Mr. Eugene G. Schulz, Jr.  
Mr. and Mrs. George H. Stewart

#### **JUPITER HILLS**

##### **TOCQUEVILLE SOCIETY**

Mrs. Joan Brengel  
William C. and Joyce G. Ferguson  
Mary and Robert J. Higgins  
Mr. and Mrs. Thomas W. Hudson, Jr.

##### **COMMANDER**

Mr. Stafford R. Gellatly  
Mr. and Mrs. George C. Kaiser  
Mr. and Mrs. Joseph Petri

#### **MONARCH COUNTRY CLUB**

##### **TOCQUEVILLE SOCIETY**

Margaret Wyeth Bradley  
Phyllis Kordick

##### **COMMODORE**

Mr. and Mrs. Rusty Brink

##### **COMMANDER**

Mr. and Mrs. Richard E. Bricker  
Ms. Maureen J. Krosin  
Ms. Margaret H. Orbesen  
Mr. and Mrs. Mike Tenzyk

#### **PIPERS LANDING**

##### **TOCQUEVILLE SOCIETY**

Mr. and Mrs. Robert Crandall

##### **COMMODORE**

Franklin Cole and Judith Nightingale  
Mr. Andrew Popky

##### **CAPTAIN**

Mr. Peery Lewis

##### **COMMANDER**

Mrs. Frances B. Andre  
Mr. and Mrs. Henry Gans

#### **STUART YACHT & COUNTRY CLUB**

##### **TOCQUEVILLE SOCIETY**

Mrs. Mim L. Huffam

##### **COMMANDER**

Mr. Mike Ferrer

#### **MARINER CAY**

##### **CAPTAIN**

David and Yancey Hillegas

##### **ANONYMOUS**

##### **COMMANDER**

Mr. and Mrs. Richard H. Foster

#### **INDIAN RIVER PLANTATION**

##### **TOCQUEVILLE SOCIETY**

Fred and Betty Kopf  
VICE-ADMIRAL

Mr. and Mrs. Clarence M. Tyler

#### **MARTIN COUNTY RESIDENTIAL**

##### **TOCQUEVILLE SOCIETY**

Anonymous  
Tom and Polly Campenni  
Lee and Gaby Eleyse  
Anonymous  
Jim Noble  
Mr. & Mrs. William H. Whittemore  
Wolcott Family Foundation

##### **COMMODORE**

Mr. Paul Campbell and Ms. Kathryn Jehle  
Mr. and Mrs. Ed Davison  
Mr. and Mrs. Gene VanCuren

##### **COMMANDER**

Nick and Dee Blount  
Mr. Robert F. Brands  
Mr. and Mrs. John P. Caval  
Anonymous

Mr. and Mrs. Ken Duke  
Mr. and Mrs. Stephen Fry

Mr. William Heller

Mr. Michael V. Ippolito

Mr. and Mrs. Roger D. Jesse

Ms. Judi Laurence

Ms. Ann Mathews

Ms. Robert L. Slater

Dr. Sara Wilcox, Ph D

### Keel Club Giving Levels

<b>Alexis de Tocqueville:</b>	\$10,000 or more
<b>Admiral:</b>	\$7,500 to \$9,999
<b>Vice Admiral:</b>	\$5,000 to \$7,499
<b>Commodore:</b>	\$2,500 to \$4,999
<b>Captain:</b>	\$1,800 to \$2,499
<b>Commander:</b>	\$1,000 to \$1,799

*While every attempt has been made to ensure the accuracy of this listing, we apologize for any errors or omissions. Some Leadership Members who contributed through payroll deduction or gave their gifts through a corporate entity or foundation might not be listed, as United Way may not receive a complete record of these names. Please advise us of any corrections so we can recognize you next year.*

# 2015-16 Keel Club — Employee Campaign

## Top Corporate and Employee Campaigns

1	<b>Publix Super Markets</b>	\$450,447
2	<b>Florida Power &amp; Light Company</b>	\$358,986
3	<b>Seacoast Bank</b>	\$99,535
4	<b>Raymond James Associates/ Saelzer/Atlas/Silcox</b>	\$39,680
5	<b>Martin Health System</b>	\$39,350
6	<b>Wells Fargo</b>	\$33,121
7	<b>UPS</b>	\$26,651
8	<b>Bank of America</b>	\$22,209
9	<b>Pratt &amp; Whitney</b>	\$20,900
10	<b>Martin County School District</b>	\$16,821
11	<b>Martin County Board of County Commissioners</b>	\$15,039
12	<b>City of Stuart</b>	\$13,577



## Publix Super Markets TOPS IN GIVING

Corporate Gift from Publix Super Markets Charities

**\$193,200**

Publix employee workplace campaign

**\$257,247**

Total Publix Campaign

**\$450,447**

### PUBLIX SUPER MARKETS

#### VICE-ADMIRAL

Russ Reaver

#### COMMODORE

Corona and Cedric Brown

Christine Lambiase

Mark Teasley

#### CAPTAIN

The DiGiuseppi Family

A.P. Kinloch

Caity Kinloch

#### COMMANDER

Ramon Aguila

Keith Allegra

James Andreacchio

Bradford Annis

Lacy Armstrong

Christine Bagnati

Mr. & Mrs. Peter Balsamo

Sean and Danielle Barker

Barbara and Rick Benkovich

Rich Benkovich

The Blease Family

Reeann, Greg & Nova-Lee Bogert

Dale Booth

James Bower

Fredric Brandley

Greg Butler

Frank Caffrey and Family

Cathy Cario and Family

Julio Carney and Family

#### ANONYMOUS

Mayte Cruz Rodriguez

Maureen D'Antonio

Jorge De Tuya

Jessie Ealy

Antonio Espiricuteta

Christopher Foster

Laurie Gerstemeier

James P. Gillen

Timothy Glover

Marvette Gray

Rick Grinnan

Brian Haul

Arthur Hickman

Kevin Holland

Jacquez Huell

Wayne Hunter

Jeff Jenkins

Bryan and Vicki Keller

Krista Kennedy and Family

Kevin and Lauren Kestenbaum

Scott Kilhenny

Jeanette, Michael, Hunter & Leah Kirby

Russell Laine

Michael Lee

Pam and Stephen Lopez

Amanda Mack

Carol Mackie

Neil R. Maloney

Jane Manganaro

Jennifer McCullough

The McFarlane Family

John McKnight

Joshua McNamara

Robert Miller

Mariah Mowitt

Mark Newman

Kathy Overton

Taylor Radabaugh

Nicole B. Raines and Family

Meredith Rishko

Jacqueline Rodenberg

Jill Roller

William A. Roussaw

Anthony Rummo

Dilia Santamaria

Gary Smilowitz

Laquan Smith

Austin Smith

Shannon Stockhammer

Michael Strasser

Denny Sullivan

Joe and Amer Tamagnini

Jim Turcotte

Denise Uyeda

The Van Duyne Family

Stanley and Andrea Wisdom

Carol Wissinger

Joseph Wooleyhan

Steven and Amanda Yusciewitz

### FLORIDA POWER & LIGHT COMPANY

#### TOCQUEVILLE SOCIETY

Armando Pimentel

#### VICE-ADMIRAL

Bill Yeager

#### COMMODORE

William and Amy S. Albury

Mr. and Mrs. Henry Barth

David M. Cleary

Karen Hammond

Joseph Jensen

Mark Lemasney

Daniel & Deborah S. Mayers

Susan Melians

Katy and Mike O'Neil

Ricardo Rivera

#### CAPTAIN

Carine Bullock

Mary Farr

Dean Curtland

#### COMMANDER

Erin I. Arbabha

Juan & Eliana Armas

Charles Arrington

William S. Black

John G. Brady

Michael Cashman

Jeanne Catron

Robert Christman

Vincent Cornell

Mr. and Mrs. Brian K. Dunn





Seacoast Bank  
brings in big increase!

Raised

**\$100,000**

**60%**  
INCREASE

Mr. Dominick Fuca  
Brian Gedrich  
ANONYMOUS  
Rita Gwinn  
Robert C. Holbrook  
Fred E. Huber  
Mr. Edward Jantz  
Michael L. Jordan  
Mr. and Mrs. Eric S. Katzman  
Mr. and Mrs. Chuck Kivlin  
Bruce Kullman  
Mr. and Mrs. John A. Lessin  
Diane Liggio  
Richard F. Orthen  
Clifford Pell  
Frederick Pollak  
Matthew Raffenberg  
Mr. and Mrs. Stephen Reuwer  
Allen Schriver  
Bruce & Celeste Somers  
Nancy Sorensen  
Crystal Stiles  
Andrew M. Terezakis  
Jim & Karen Voorhees  
Robert Webber Jr

**SEACOAST BANK**

**COMMODORE**  
Mr. and Mrs. Dennis S. Hudson III  
**CAPTAIN**  
Stephen Fowle  
William and Barbara Hahl  
Mr. David Houdeshell  
**COMMANDER**  
Ms. Kathleen M. Cavicchioli  
Charles Shaffer

**RAYMOND JAMES & ASSOCIATES**

**TOCQUEVILLE SOCIETY**  
Gerald Saelzer  
**ADMIRAL**  
Jeff Atlas  
**VICE-ADMIRAL**  
Peter Avonda  
Peter Silcox  
**COMMODORE**  
William E. Romans

**MARTIN HEALTH SYSTEM**

**COMMANDER**  
Kenneth C. Chu  
Chuck & Charlotte Cleaver

**WELLS FARGO**

**TOCQUEVILLE SOCIETY**  
ANONYMOUS  
**COMMANDER**  
Mr. and Mrs. Ted Brown

**BANK OF AMERICA/US TRUST**

**COMMODORE**  
Mrs. Carol W. Schroeder  
Douglas Sherman

**CAPTAIN**

Kevin P. Staten  
**COMMANDER**  
Graham and Denise Ehrich

**PRATT & WHITNEY**

**COMMANDER**  
David Wishart  
Jim and Susan Denny

**MARTIN COUNTY SCHOOL DISTRICT - WARFIELD ELEMENTARY**

**COMMANDER**  
Ms. D. Jeanne Tubb

**MARTIN COUNTY BOARD OF COUNTY COMMISSIONERS**

**COMMANDER**  
Terrance A. Beauford  
Mr. Joseph Ferrara  
Mr. & Mrs. Kevin Kryzda

**CITY OF STUART**

**COMMANDER**  
Kris M. Johnson

**ALZHEIMER'S COMMUNITY CARE ASSOCIATION**

**COMMANDER**  
Mary Barnes

**AT & T**

**COMMANDER**  
Mr. Ian Cotner

**BOYS & GIRLS CLUBS OF MARTIN COUNTY**

**COMMANDER**  
Mr. Michael A. Sancho  
Mr. and Mrs. Alexander Soares

**BERGER, TOOMBS, ELAM, GAINES & FRANK**

**COMMANDER**  
Britt Frank

**COUNCIL ON AGING**

**COMMANDER**  
Karen Ripper

**DUKE ENERGY**

**COMMANDER**  
Richard Donatelli  
Russell D. Merle

**ENTERPRISE RENT-A-CAR**

**COMMANDER**  
Anthony L. Addoriso

**GERTRUDE WALDEN CHILD CARE CENTER**

**COMMANDER**  
Jimmy and Thelma Washington

**GILLMAN, SHAPIRO AND DILLEMUTH, PA**

**CAPTAIN**  
Mr. and Mrs. Jeffrey Gillman

**HELPING PEOPLE SUCCEED**

**COMMANDER**  
Suzy Hutcheson

**TIM KINANE**

**COMMANDER**  
Tim Kinane

**LESSER, LESSER, LANDY & SMITH**

**COMMANDER**  
Mr. and Mrs. Chad Hastings

**MACY'S**

**COMMANDER**  
Geoffrey Lieberman

**MARK BRECHBILL, CPA**

**COMMANDER**  
Mr. Robert J. Thomas

**MORGAN STANLEY**

**COMMANDER**  
Mr. Tom Whittington and Mrs. Susan Whittington

**NAUTICAL & INDUSTRIAL SUPPLY**

**COMMANDER**  
Ben Posdal

**RV JOHNSON INSURANCE**

**COMMANDER**  
Rudy Johnson

**MARTIN COUNTY SUPERVISOR OF ELECTIONS OFFICE**

**COMMANDER**  
Vicki Davis

**UNITED WAY OF MARTIN COUNTY**

**COMMODORE**  
Mark and Nancy Perry  
James and Donna Vojcsik  
**CAPTAIN**  
John and Theresa Schineis

**COMMANDER**  
Jeff and Lucy Corley  
James and Elisabeth Glynn  
Carol L. Hodnett

**SHAUN W. WIEDRICK, PA**

**COMMANDER**  
Shaun W. Wiedrick

**Keel Club Giving Levels**

<b>Alexis de Tocqueville:</b>	\$10,000 or more
<b>Admiral:</b>	\$7,500 to \$9,999
<b>Vice Admiral:</b>	\$5,000 to \$7,499
<b>Commodore:</b>	\$2,500 to \$4,999
<b>Captain:</b>	\$1,800 to \$2,499
<b>Commander:</b>	\$1,000 to \$1,799

While every attempt has been made to ensure the accuracy of this listing, we apologize for any errors or omissions. Some Leadership Members who contributed through payroll deduction or gave their gifts through a corporate entity or foundation might not be listed, as United Way may not receive a complete record of these names. Please advise us of any corrections so we can recognize you next year.

# 2015-16 LIVE UNITED AWARDS

Presented by  FPL

United Way would like to thank our partner agencies, corporate and community contributors, and all of our volunteers for supporting our mission throughout the year!



**Corporate Champion Award:** Florida Power & Light Company  
*Chad Hastings, Crystal Stiles, Jim Albury, Amy Albury, Amy Brunjes and Ron Bartnick*



**Corporate Champion Award:**  
Publix Super Markets  
*Anthony Roman and Adriana Sardinas*



**Corporate Spirit Award:** Seacoast Bank  
*Olivia Kirchman, Chuck Shaffer and Denise Anderson*



**Agency Spirit Award:** Boys & Girls Clubs of Martin County  
*Sheriff William Snyder, Joanne Towner*



**Corporate Spirit Award:**  
City of Stuart  
*Paul Nicoletti and Tom Campenni*



**Community Spirit Award:**  
Willoughby Golf Club.  
*Vicki Davis and Michelle Reilly.*



**Chairman's Award:** Kimberly Perron  
*Amy Albury and Kimberly Perron*



**Passing the torch!** 2015-16 Campaign Chair Chad Hastings (right) passes the torch to 2016-17 Campaign Chair Denise Ehrich and Vice-chairs Bob and Amy Brunjes

## 2015-16 Corporate Partners

**DIAMOND**  
\$100,000 OR MORE



**PLATINUM**  
\$20,000 OR MORE

Johnson & Johnson



**GOLD**  
\$10,000 OR MORE



**SILVER**  
\$5,000 OR MORE



RAYMOND JAMES

Bank of America



The Stuart News | TCPALM

**BRONZE**  
\$2,500 OR MORE



PNC BANK



**COPPER – \$1,000 OR MORE**

Dillard's  
Enterprise Holdings  
General Electric  
JC Penney  
Tim Kinane  
Martin Health System  
Nautical Supply, Inc.

Proctor, Crook, Crowder & Fogal, P.A.  
RV Johnson Insurance  
Shawn W. Wiedrick, P.A.  
SunTrust Bank  
Target  
Thomas Pinnacoli – Attorneys At Law

**2015-16 EVENT SPONSORS – \$1,000 OR MORE**

Dolores and Leo Clancy  
Frank Byers and Karen Rodgers  
Hal and Melanie Fenner  
Florida Power & Light Company  
Phyllis Kordick  
Kramer, Sopko, Levenstein, PA  
Lesser, Lesser, Landy & Smith  
Lively Orthodontics  
Martin Health System

Palm City Presbyterian Church  
Saelzer/Atlas Wealth Management  
Group of Raymond James  
Treasure Coast Hospice  
Treasure Coast Urgent and Family Care  
Waste Management  
Wilmington Trust

# GREAT THINGS HAPPEN WHEN WE LEAD THE WAY



## Leaders United

This year, United Way launched a new affinity group, Leaders United. These passionate professionals GIVE, ADVOCATE and VOLUNTEER to further the mission of United Way.

Members come together to connect with peers, build leadership skills and learn about community issues and how to make a difference.

*"I have always been very passionate about giving back to the community, and Leaders United offers me the opportunity to do that alongside other local like-minded professionals. I am also afforded the unique opportunity to learn first-hand about the issues facing our community and have an impact on change."*

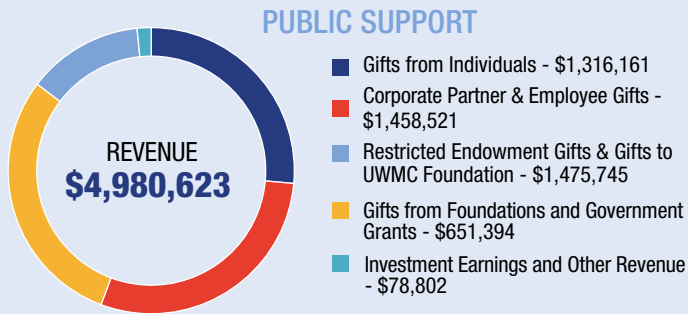
– Donna DeMarchi, Leaders United Chair

## Financial Information

FINANCIAL ACTIVITIES FISCAL YEAR ENDING JUNE 30, 2016

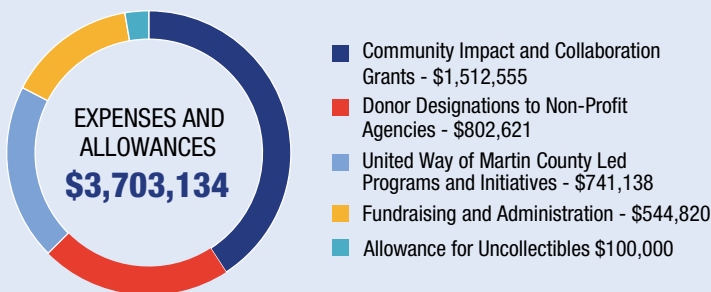
### United Way of Martin County and United Way of Martin County Foundation

In addition to a record setting campaign that raised over \$2.7 million, the United Way of Martin County Foundation secured \$1.5 million in additional commitments to its Endowment Fund. By growing endowment reserves, United Way of Martin County hopes to one day, through endowment earnings, be able to fulfill the funding needs of partner agencies into the future.



**EXPENSES AND ALLOWANCES**

Our administrative expense rate is 11.0% of Public Support. United Way of Martin County values its fiduciary responsibility to donors, funders and the community, and strives to operate as efficiently as possible.



### Community Impact and Collaboration Grants

In fiscal year 2015-2016, United Way of Martin County invested in 53 programs focusing on the strategic priority areas of improving education, promoting good health and supporting financial stability. Additionally, United Way of Martin County joined forces with local non-profits, local government and private donors to transform the Golden Gate community by improving access to basic needs, affordable housing, jobs and living wages, and education.

### Designations to other Non-Profit Agencies

United Way of Martin County believes in the power of promoting philanthropy as a whole and is proud to fulfill donor designations to other 501(c)3 organizations.

### United Way of Martin County Led Programs and Initiatives

United Way uses its expertise and strategic resources to identify community issues and lead in the implementation of sustainable solutions.

United Way of Martin County sponsors two internal programs, Martin Volunteers and CHARACTER COUNTS!. Martin Volunteers provides volunteer recruitment and placement services through the Volunteer Center and the Retired Senior Volunteer Program (RSVP) federal grant. CHARACTER COUNTS! promotes, educates and rewards good character within Martin County schools and our community.

The White Doves Holiday Project is a United Way/Martin Volunteers event which annually provides toys and food to thousands of qualifying Martin County residents.

Read more about these and other United Way led programs and initiatives at [unitedwaymartin.org](http://unitedwaymartin.org).

IRS 990s for United Way of Martin County and its Foundation are available for viewing at [unitedwaymartin.org](http://unitedwaymartin.org)

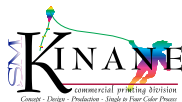
UNITED WAY OF MARTIN COUNTY

10 S.E. Central Parkway, Suite 101  
Stuart, FL 34994

FIRST-CLASS  
MAIL  
U.S. POSTAGE  
**PAID**  
STUART, FL  
PERMIT No. 97



Community appeal  
letter enclosed!



REGISTRATION # CH1474 FLORIDA DEPARTMENT OF AGRICULTURE & CONSUMER SERVICES A COPY OF THE OFFICIAL REGISTRATION AND FINANCIAL INFORMATION MAY BE OBTAINED FROM THE DIVISION OF CONSUMER SERVICES BY CALLING TOLL-FREE (800) 435-7352 WITHIN THE STATE. REGISTRATION DOES NOT IMPLY ENDORSEMENT, APPROVAL, OR RECOMMENDATION BY THE STATE.